

Basic Specification	
Model	YH200T1-100
Type	Scroll Compressor
Application	Air conditioning
Normal Power (HP)	7 HP
Capacity (BTU/Hr)	79335
Refrigerant	R407C
Displacement (M <sup>3</sup> /H)	22.6
Evaporating Temperature (°F)	45.0
Condensing Temperature (°F)	129.9
Liquid subcooling (°F)	14.9
Suction Superheat (°F)	20.0
Power Input (W)	7177
COP	11.05
Current (A)	10.75

Mechanical and Physical Data	
Length/Width/Height (mm)	239/239/463
Weight (kg)	38
Stub Suction (inch)	7/8
Stub Discharge (inch)	1/2
Base mounting (hole dia)	190X190(8.5)
Oil type	POE
Initial charge of oil quantity (L)	1.6
Recharge of oil quantity (L)	1.45
High Side PS Max., (MPa)	3.0
Low Side PS Max., (MPa)	2.0

Electrical Data	
Electricity	460V/60Hz/3P
Standard Conditions	7.2/54.4/11.1/8.3
Normal Power (HP)	7
Normal Capacity (W)	23160
Normal Power input(W)	7164
Normal COP (W/W)	3.23
Normal Current(A)	11.2
Locked Rotor Current(A)	85
Maximum operating current(A)	16.1

Suction Superheat: 20.0

Liquid subcooling: 14.9

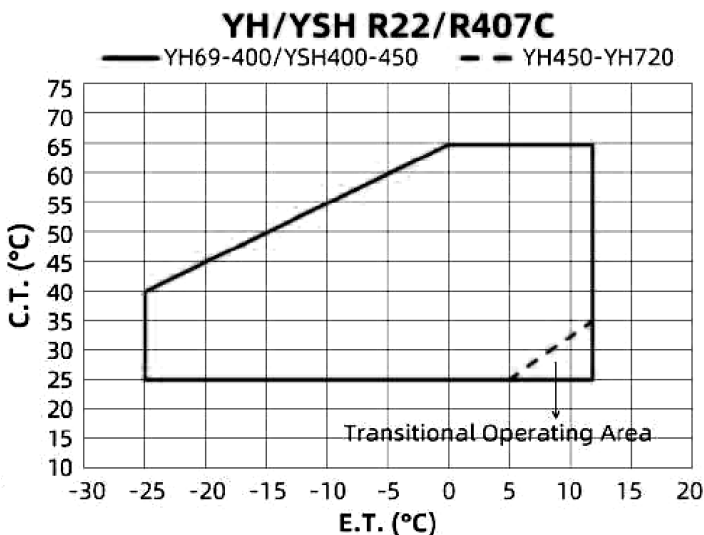
Capacity (BTU/h)								
Tc/Te	-13	0	10	20	30	40	50	54
100	24453	35142	44944	56316	69533	84731	102148	109730
110		32956	42382	53311	66015	80632	97469	104812
120			39719	50169	62327	76329	92483	99587
130				46856	58434	71821	87258	94054
140					54336	67040	81759	88248
149						62532	76568	82750
77	28448	39923	50510	62737	76944	93234	111881	120009
80	27936	39309	49793	61951	76022	92176	110686	118746
90	26194	37260	47403	59219	72880	88556	106554	114408

Power Input (W)								
Tc/Te	-13	0	10	20	30	40	50	54
100	4630	4837	4937	5005	5057	5111	5184	5222
110		5464	5554	5612	5655	5701	5766	5801
120			6269	6315	6346	6380	6435	6466
130				7130	7147	7168	7209	7235
140					8082	8086	8111	8131
149						9039	9047	9060
77	3434	3660	3774	3854	3917	3980	4061	4103
80	3574	3799	3911	3990	4053	4116	4197	4238
90	4070	4288	4396	4470	4529	4589	4667	4707

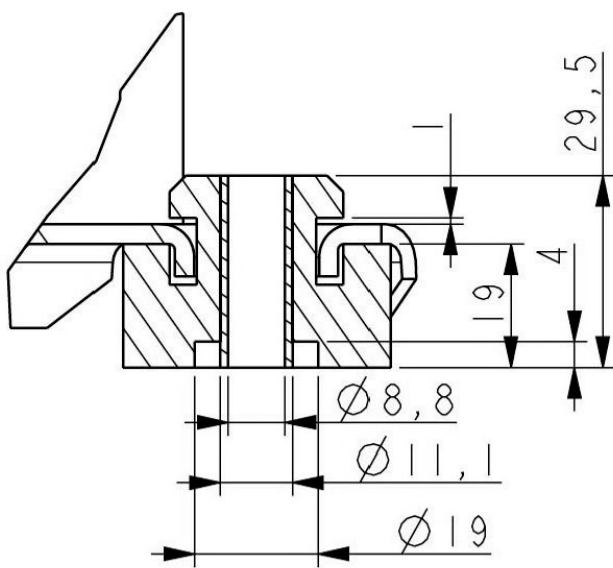
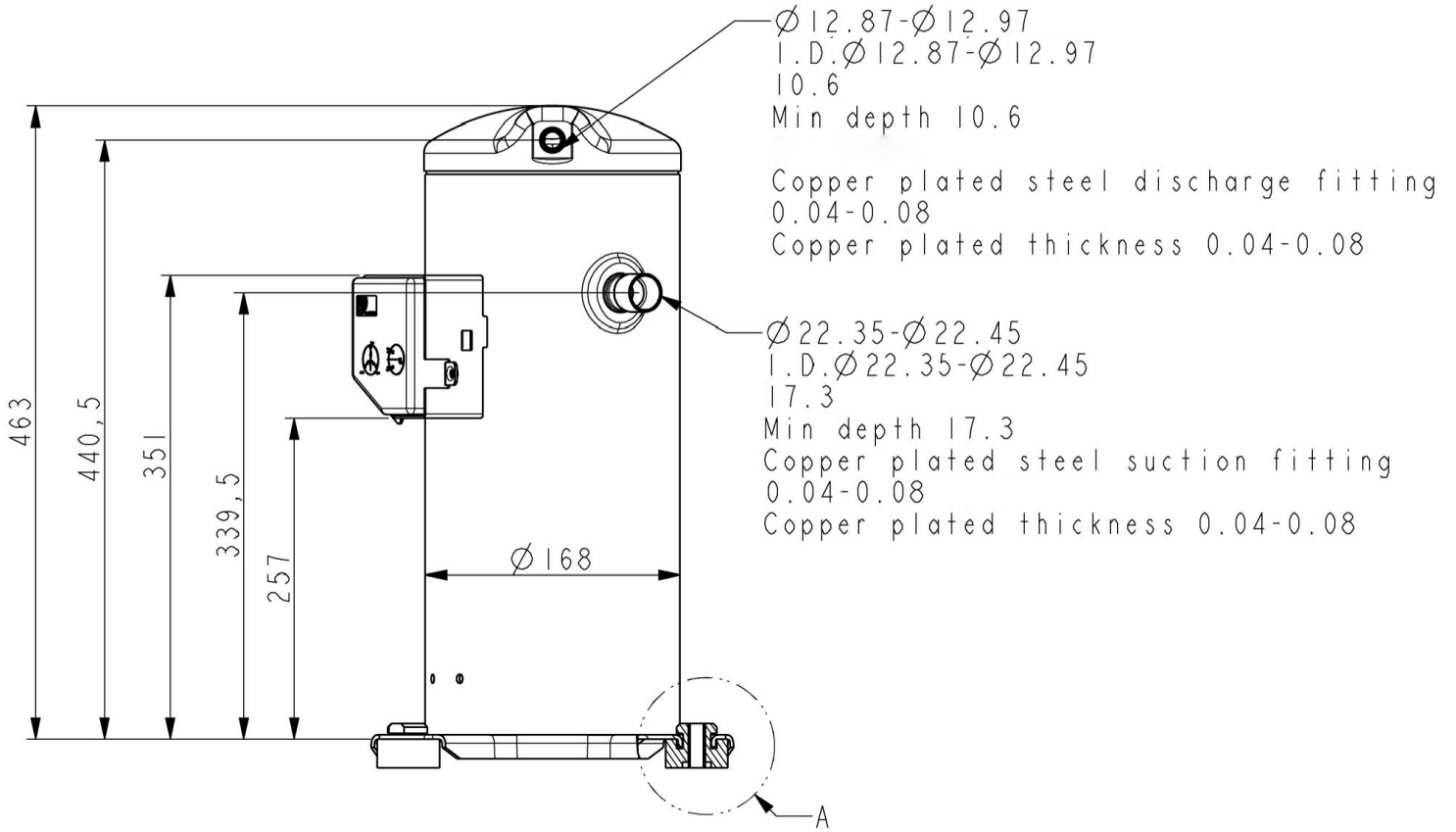
Current (A)								
Tc/Te	-13	0	10	20	30	40	50	54
100	7.84	8.07	8.18	8.26	8.32	8.38	8.46	8.51
110		8.74	8.85	8.92	8.97	9.03	9.1	9.14
120			9.66	9.72	9.76	9.8	9.87	9.9
130				10.69	10.71	10.74	10.79	10.82
140					11.86	11.87	11.89	11.91
149						13.07	13.07	13.08
77	6.68	6.91	7.02	7.1	7.16	7.23	7.31	7.36
80	6.81	7.04	7.15	7.23	7.3	7.36	7.45	7.49
90	7.27	7.51	7.62	7.7	7.77	7.83	7.92	7.97

Mass Flow (Kg/h)								
Tc/Te	-13	0	10	20	30	40	50	54
100	146.79	214.74	274.34	341.68	418.42	505.67	605.15	648.56
110		210.68	270.08	337.27	413.9	501.08	600.54	643.96
120			265.15	331.98	408.29	495.21	594.44	637.78
130				325.7	401.5	487.94	586.75	629.93
140					393.36	479.13	577.3	620.24
149						469.8	567.23	609.88
77	155.26	222.96	282.24	349.17	425.39	512.01	610.77	653.86
80	154.13	221.94	281.32	348.37	424.71	511.48	610.39	653.55
90	150.44	218.45	278.05	345.34	421.98	509.09	608.39	651.72

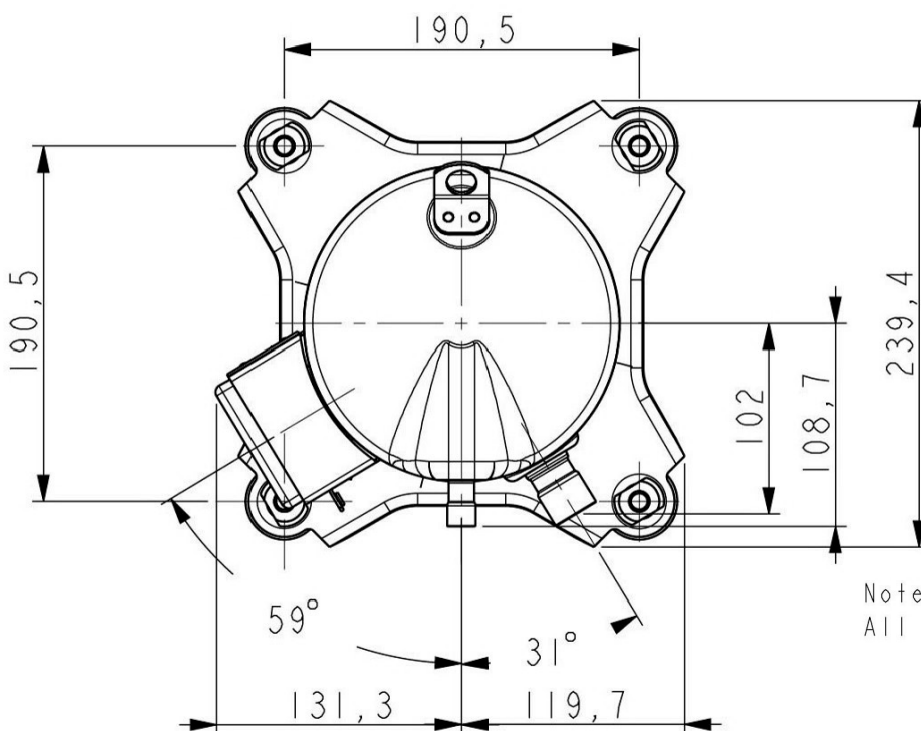
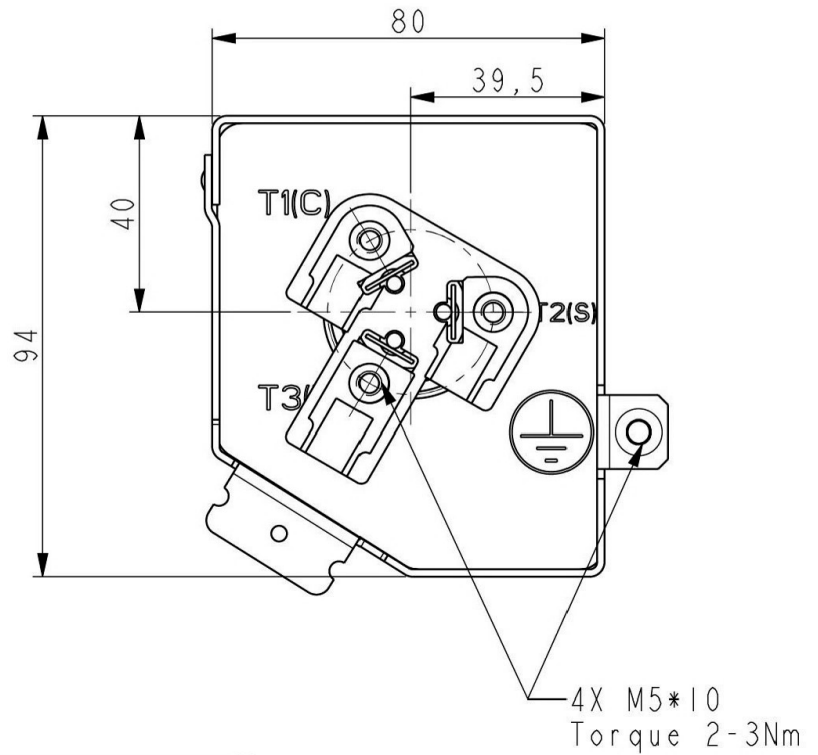
Compressor Operating Envelope



Drawings  
Outline Drawing



Detail A: Compressor Foot



ALL TOLERANCES UNLESS OTHERWISE SPECIFIED:  $\pm 2$

TUBE ENDS MUST BE PLUGGED

Notes:  
All Tolerance unless other specified  $\pm 2$

Application  
» See Details in the YH serial air-condition scroll compressor application manual